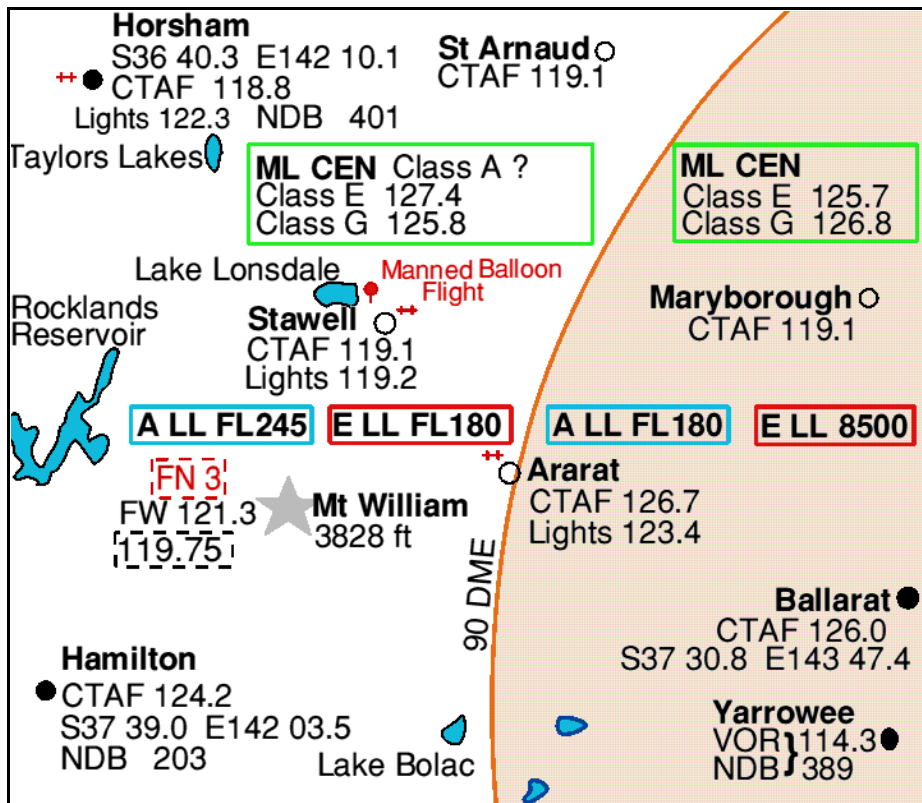


## Airspace

Our area is in the Melbourne Radar Advisory Service, with a radio frequencies of 127.4 MHz in Class E (FL180 to FL245) and 125.8 MHz in Class G (below FL180) west of 90NM radius.



Operation in Class A airspace requires an airways clearance and prior special approval. Operation in Class E airspace requires no airways clearance but must be confined within designated areas - see previous pages for the Air Safety Authority Letter of Agreement and zones. Class E airspace is between FL180 and FL 245 outside the 90nm radius from Melbourne (ML) (through Ararat aerodrome) so the Grampians and Stawell have a limit of FL245. Between the 90nm radius and the 40nm radius from ML, Class E is between 8,500 ft and FL180.

**nb. Flight Level 245 is 24,500 feet with the altimeter set at 1013 millibars, FL180 is 18,000ft and FL125 is 12,500 ft.**